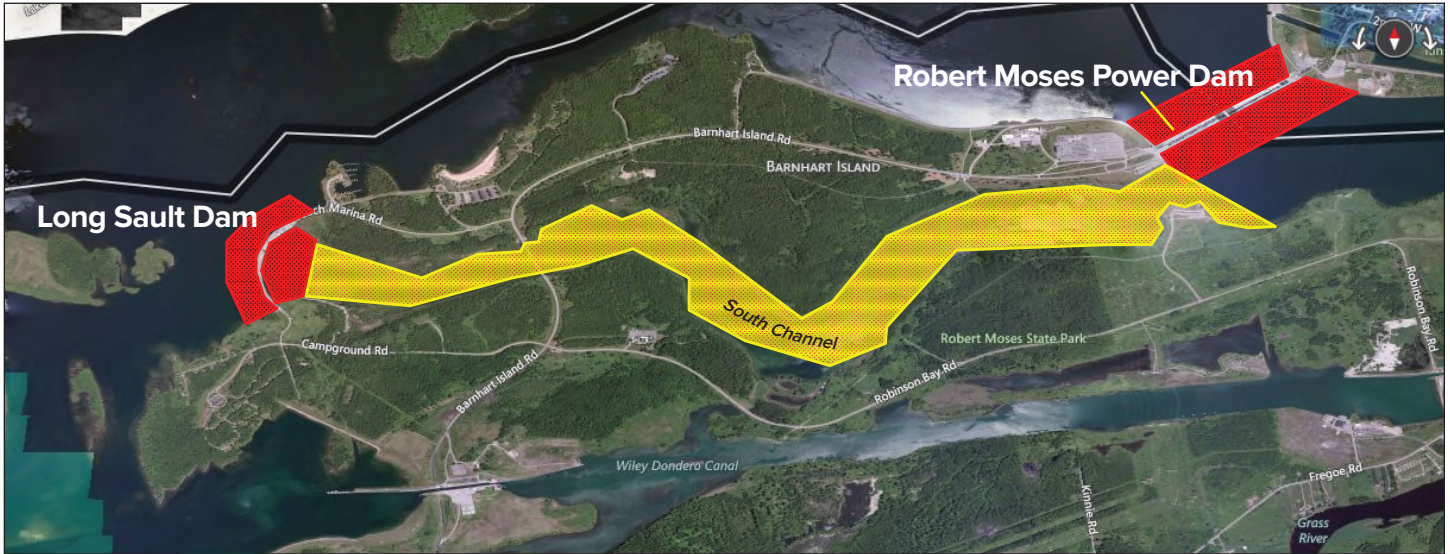




## About Winter Conditions In/Around St. Lawrence-Franklin D. Roosevelt Power Project



 **Stay Out – 800 feet Security Zone**       **Stay Off Ice – Spill Impact Area**

In the event water is released from Long Sault Dam, by order of the International Joint Commission, the New York Power Authority wants to make you aware of potentially dangerous changes in water or ice conditions.

Rapidly changing water flows near Long Sault Dam and the South Channel of the St. Lawrence River may create unsafe conditions on the ice.

Look for signs warning of potentially hazardous conditions on the river due to release of water. Signs will be placed at various locations near the river.

**When water is released from the Long Sault Dam:**

1. Listen for sirens announcing the spill and keep off the ice.
2. Keep back a minimum of 800 feet from the Long Sault Dam spillway and Robert Moses Power Dam, on both the upstream and downstream sides.
3. Always use caution on the river and on riverbanks.
4. Be aware of changing river conditions and strong currents.

For more information on water flows visit: [http://ijc.org/en\\_/islrbc](http://ijc.org/en_/islrbc)



For more information on marine conditions, visit the Great Lakes St. Lawrence Seaway System website:



<http://www.greatlakes-seaway.com/en/>